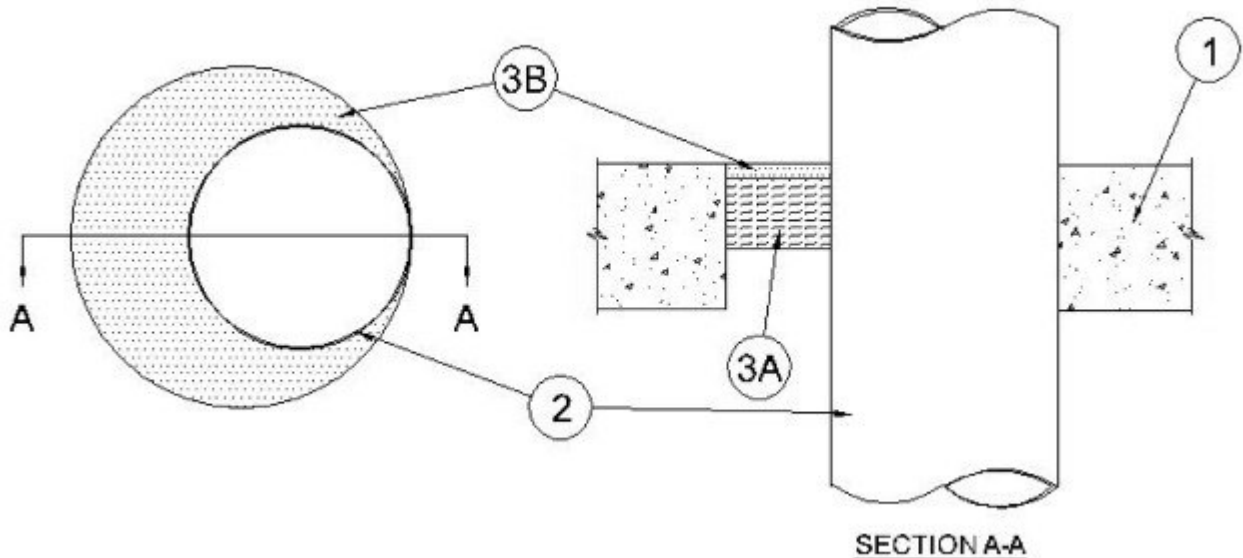


System No. C-AJ-1571

April 18, 2007

F Rating — 2 Hr

T Ratings — 0, ¼ and ½ Hr (See Item 2)



1. Floor or Wall Assembly — Min 4-1/2 in. thick reinforced lightweight or normal weight (100 - 150 pcf) concrete. Wall may also be constructed of any UL Classified **Concrete Blocks***. Max diam of opening is 11-1/4 in.

See **Concrete Blocks (CAZT)** category in the Fire Resistance Directory for names of manufacturers.

2. Through Penetrant — One metallic pipe, tubing or conduit installed concentrically or eccentrically within the firestop system. An annular space of min 0 in. (point contact) to a max 2-3/4 in. is required between the penetrant and the periphery of the opening. Pipe, tubing or conduit to be rigidly supported on each side of the floor assembly. The following types and sizes of metallic pipes, tubing or conduit may be used:

A. Steel Pipe — Nom 8 in. diam (or smaller) Schedule 10 (or heavier) steel pipe.

B. Copper Pipe — Nom 4 in. diam (or smaller) Regular (or heavier) copper pipe.

C. Copper Tubing — Nom 4 in. diam (or smaller) Type L (or heavier) copper tubing.

D. Conduit — Nom 6 in. diam (or smaller) steel conduit or nom 4 in. diam (or smaller) steel electrical metallic tubing.

T Rating is ½ hr when annular space is 1-7/8 in. or less and min ½ in. thickness of sealant and min 4 in. thickness of mineral wool is used. T Rating is ¼ hr when annular space is 1-7/8 in. or less, and min ¼ in. thickness of sealant and min 2 in. thickness of mineral wool is used. The T Rating is 0 hr for annular spaces greater than 1-7/8 in.

3. **Firestop System** — The firestop system shall consist of the following:
- A. **Packing Material** — Nom 2 in. or 4 in. thickness of min 4 pcf mineral wool batt insulation firmly packed into opening as a permanent form. (See Item 2 above) Packing material to be recessed from top surface of floor or from both surfaces of wall as required to accommodate the required thickness of fill material.
 - B. **Fill, Void or Cavity Material* - Caulk** — Min ¼ in. or ½ in. thickness of fill material applied within the annulus, flush with top surface of floor or with both surfaces of wall. (See Item 2 above)

FLAME TECH INC — Firestop 814+

*Bearing the UL Classification Mark