

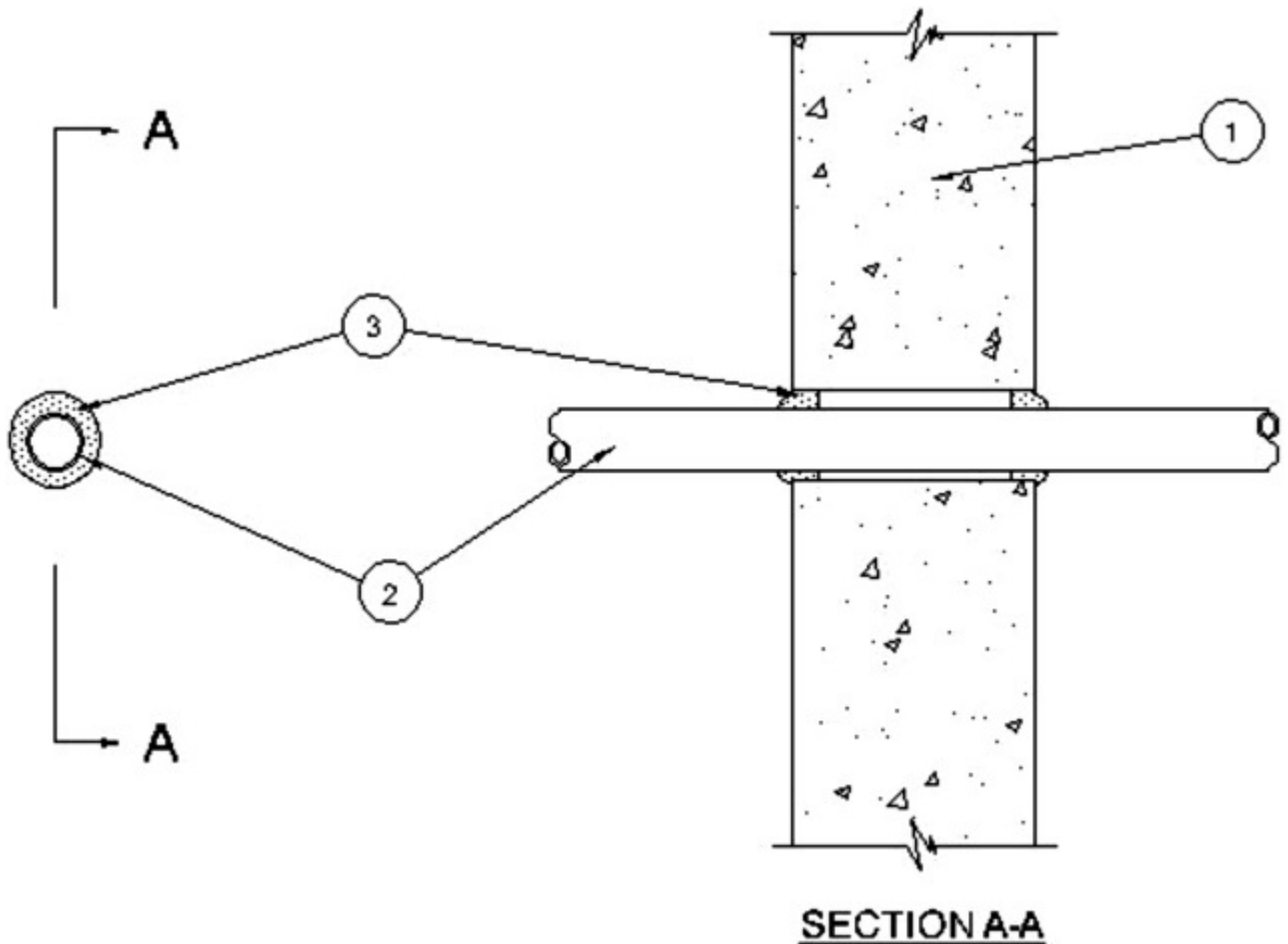
System No. W-J-2213

February 16, 2007

F Rating — 2 Hr

T Ratings — 1-3/4 and 2 Hr (See Item 3)

L Rating at Ambient — Less Than 1 CFM/sq ft



1. **Wall Assembly** — Min 5 in. (127 mm) thick reinforced lightweight or normal weight (100-150 pcf (1600-2400 kg/m³)) structural concrete. Wall may also be constructed of any UL Classified **Concrete Blocks***. Max diam of opening is 2-11/16 in. (68 mm).

See **Concrete Blocks** (CAZT) category in the Fire Resistance Directory for names of manufacturers.

2. **Through Penetrants** — One nonmetallic pipe to be installed within the firestop system. The annular space between the pipe and periphery of opening

shall be min of 1/4 in. (6 mm) to max 1/2 in. (13 mm). Pipe to be rigidly supported on both sides of wall assembly. The following types and sizes of nonmetallic pipes may be used:

A. Polyvinyl Chloride (PVC) Pipe — Nom 1-1/2 in. (38 mm) diam (or smaller) Schedule 40 solid core or cellular core PVC pipe for use in closed (process or supply) piping systems. Cellular core PVC pipe is limited to use with the A/D FIREBARRIER Putty II fill material only (Item 3).

B. Chlorinated Polyvinyl Chloride (CPVC) Pipe — Nom 1-1/2 in. (38 mm) diam (or smaller) SDR13.5 CPVC pipe for use in closed (process or supply) piping systems.

3. Fill, Void or Cavity Materials* — Min 5/8 in. (16 mm) thickness of fill material applied within annulus, flush with both surfaces of wall assembly. Additional fill material to be installed such that a min 3/8 in. (10 mm) thick crown is formed around the pipe on both sides of wall.

A/D FIRE PROTECTION SYSTEMS INC — A/D FIREBARRIER Putty II

The T Rating is 1-3/4 hr, except that the T Rating is 2 hr when the A/D FIREBARRIER Putty II fill material is used.

*Bearing the UL Classification Mark